

# CALLISTO



Find each of these features on the globe of Callisto. Match each to the photo below by filling in latitude and longitude:

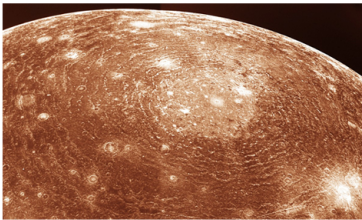
example

Tindr crater



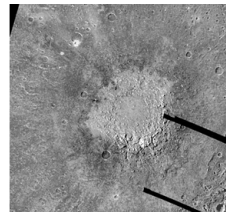
latitude 2° south longitude 5° east

Valhalla Impact Basin



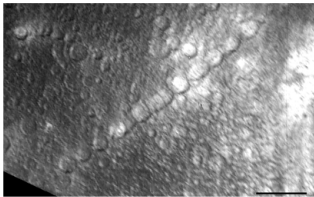
latitude 15n longitude 55

Lofn Crater



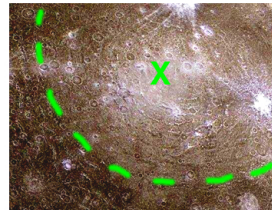
latitude 56s longitude 23

Gipul Catena



latitude 70n longitude 45

Asgard Basin



latitude 30n longitude 140

## To Find Out:

1. Use your measuring tape: How far is it from Nirkes to Tornarsuk?
2. Now find a city the same distance from your home on Earth. (For example, the distance from Boston to Los Angeles is 942 miles or 1515 kilometers.)

**1250 miles / 1500 km**

## To Think About:

1. Is the Earth's equatorial plane perpendicular to its axis of rotation, or is it lined up with the Earth's orbit around the Sun? **Aligned with axis, which is why we have seasons.**
2. What are the purposes of maps? What do they show us? Why are latitude and longitude lines important?