

CALLISTO



Find each of these features on the globe of Callisto. Match each to the photo below by filling in latitude and longitude:

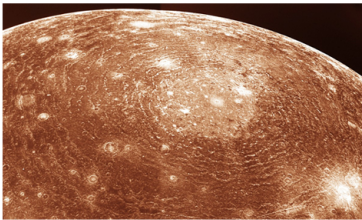
example

Tindr crater



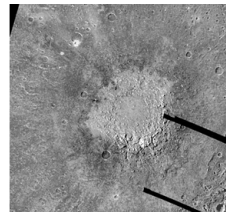
latitude 2° south longitude 5° east

Valhalla Impact Basin



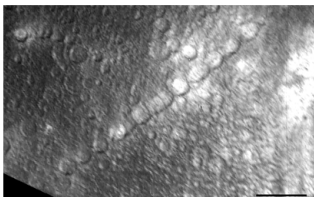
latitude _____ longitude _____

Lofn Crater



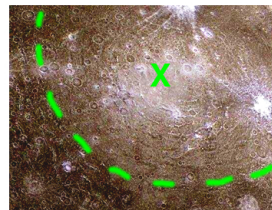
latitude _____ longitude _____

Gipul Catena



latitude _____ longitude _____

Asgard Basin



latitude _____ longitude _____

To Find Out:

1. Use your measuring tape: How far is it from Nirkes to Tornarsuk?
2. Now find a city the same distance from your home on Earth. (For example, the distance from Boston to Los Angeles is 942 miles or 1515 kilometers.)

To Think About:

1. Is the Earth's equatorial plane perpendicular to its axis of rotation, or is it lined up with the Earth's orbit around the Sun?
2. What are the purposes of maps? What do they show us? Why are latitude and longitude lines important?